

Making things better for people with disability.

How to join the
City of Adelaide group.

Easy English



CITY OF
ADELAIDE

City of Adelaide

Access and Inclusion Advisory Panel

Information for Expressions of Interest

This booklet has some hard words.

The first time we write a hard word

- The word is in **blue**
- We will write what the hard word means.



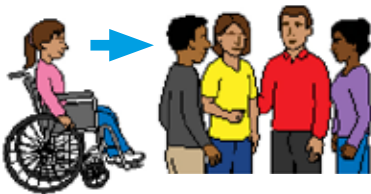
The City of Adelaide is a part of the government that looks after the city.



The Adelaide city is the area with the tallest buildings and lots of parks.



The City of Adelaide is making a group of people who will talk about ways to make sure everyone is **included** in the city.



Being **included** means people can join in even if they have disability.



The group will talk about ways to make things better for people with disability.



The group is called the
Access and Inclusion Advisory Panel.



What the group says will help the
City of Adelaide make a plan.



This plan will make the city better for
people with disability.



You are invited to join this group.



Your knowledge about disability will help
the group.

Who can be a member?



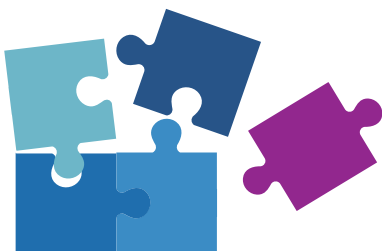
To join the group you must ask to become a member.



Anyone can ask to be a member.



Only 12 people will be chosen for the group.



Some people will be a better fit for the group than others.

The people who will be the best for the group may:



- Have disability



- Help a person with disability



- Have been part of a group or panel before



- Live in the city



- Work in the city



- Study in the city



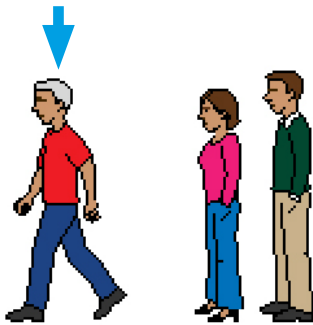
- Are interested in making things better for people with disabilities



You don't need to be all of these things to join the group.



Lots of different kinds of people will be chosen for the group.



Some kinds of people will be chosen first.

The people may be:



- Younger people aged 18 to 30 years old



- Older people aged over 65 years old



- Women



- People who get money from the government to help their disability



- Aboriginal people



- People who were born in different countries

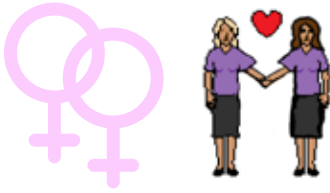


- People who speak different languages

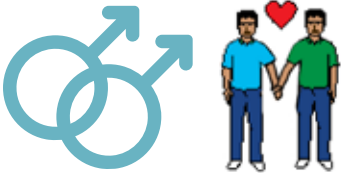


- People from the **LGBTQI** community

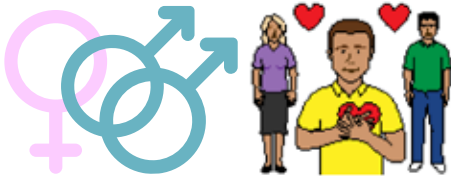
LGBTQI is a group of people who may be:



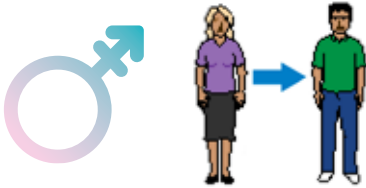
- Women who are attracted to women



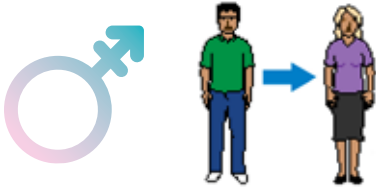
- Men who are attracted to men



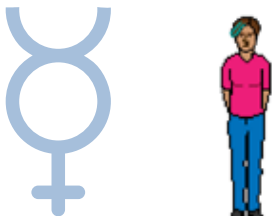
- People who are attracted to both men and women



- People who were women and are now men



- People who were men and are now women



- People who do not call themselves a man or a woman



You don't need to be all of these descriptions to join the group.

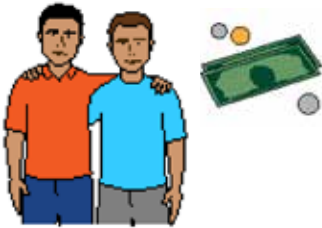
Will I be paid?



You will be paid for every meeting you attend.

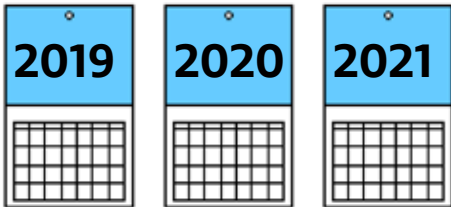


If you have to pay for someone to drive you to the meeting, we will give you the money back.

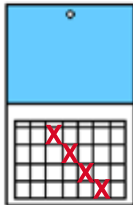


If you need to pay someone to come to the meeting with you, we will give you the money back.

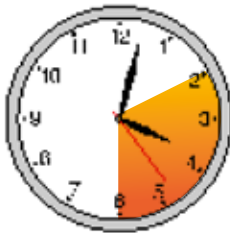
What do members need to do?



You would be a part of the group for 2 or 3 years.



You would go to meetings 4 times each year.



The meeting length will be between 2 hours and 4 hours.

When are the meetings?



The first meeting is on
Wednesday 27 March 2019.



This meeting will be about what you need
to do in the next meetings.



The second meeting is on
Wednesday 15 May 2019.

How do I apply?



You can ask to become a member of the group by phone or email.



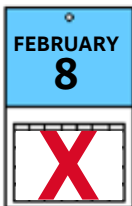
The person to speak to is named Sarah Cleggett.



You can phone her on: 8203 7385



You can email her at:
s.cleggett@cityofadelaide.com.au



You must contact her by 5 pm
Friday 8 February 2019.



Sarah will ask you questions about yourself.



She may ask you to meet her
for an interview.

End of Guide