



Explore Adelaide by Bike

The city of Adelaide has wide streets and beautiful Park Lands, making it a great place to cycle. The city has a vibrant cultural identity and a number of historical attractions.

Adelaide City Council is committed to improving the city and making it more environmentally friendly. The Council is creating more bike lanes and bike parking facilities, as well as providing more free City Bikes.

Whether you cycle as a mode of transport, a relaxing recreation or an exhilarating sport, Adelaide city is a great place to ride a bike.

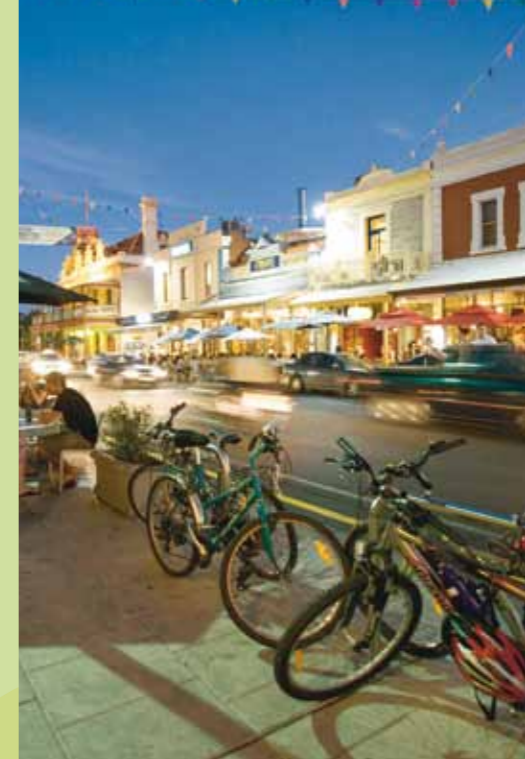


Adelaide Park Lands

Adelaide's Park Lands are a defining feature of the city. The 760 hectares of green open space surround the whole city and provide a rich social, environmental and recreational resource. Enjoy the walking trails, cycle tracks, picnic and bird watching areas.

The Adelaide Park Lands and city layout have received the nation's highest heritage honour by being included on the National Heritage List.

Cycle through the Park Lands and experience their serenity.



enjoy Adelaide
A cycling friendly city

Bike trails, lanes and attractions within the city of Adelaide



DELAIDE CITY COUNCIL



Park Lands Trail

The Park Lands Trail is a fun, safe and easy way to explore Adelaide's beautiful Park Lands. The trail is a shared cycling and walking recreation path that weaves its way through the Park Lands. It is surfaced with a distinctive ochre colour to help you find your way.

The southern section of the Park Lands Trail surrounds almost all of the city centre.

There are many places to stop along the trail to enjoy the trees, birds and views of the city and surrounds.

A Taste of the City of Adelaide

Adelaide is a vibrant city with a rich heritage and culture that is reflected in the character of its streets and diversity of its people and places. Make sure you visit:

1. **Adelaide Central Market** – the city's fresh food pantry.
2. **Rundle Mall** – for some great retail therapy.
3. **Rundle Street** – Adelaide's cosmopolitan centre filled with cafes, restaurants and boutique fashion stores, and Adelaide's cultural canvas, the Rundle Lantern.
4. **Gouger Street** – home to many of the city's best restaurants and the Adelaide Central Market.
5. **Melbourne Street and O'Connell Street** – North Adelaide's feature streets boast a wide variety of cafes, restaurants and fashion boutiques.
6. **North Terrace** – the city's cultural boulevard with important heritage landmarks.
7. **Hutt Street** – classy city strip with fine dining restaurants and cafes.

Bicycle Parking

With more than 250 bike parking rails spread across the city, cycling through and parking in the city is easy. The bike rails are at convenient locations along roads with bike lanes and at popular destinations such as shopping precincts, libraries and community centres.

On-street bike parking nodes are located on:

- **Rundle Street** (northern side) – in front of the Scout Outdoor Centre
- **Pirie Street** (northern side) – immediately east of the Gawler Place intersection

Adelaide City Council has also installed undercover bike parking places in all 10 UPark car parks so you can park your bike out of the weather at locations throughout the city.



Free City Bikes

Explore the city on a FREE City Bike. The FREE City Bike program is delivered by Bike SA, with support from the Adelaide City Council.

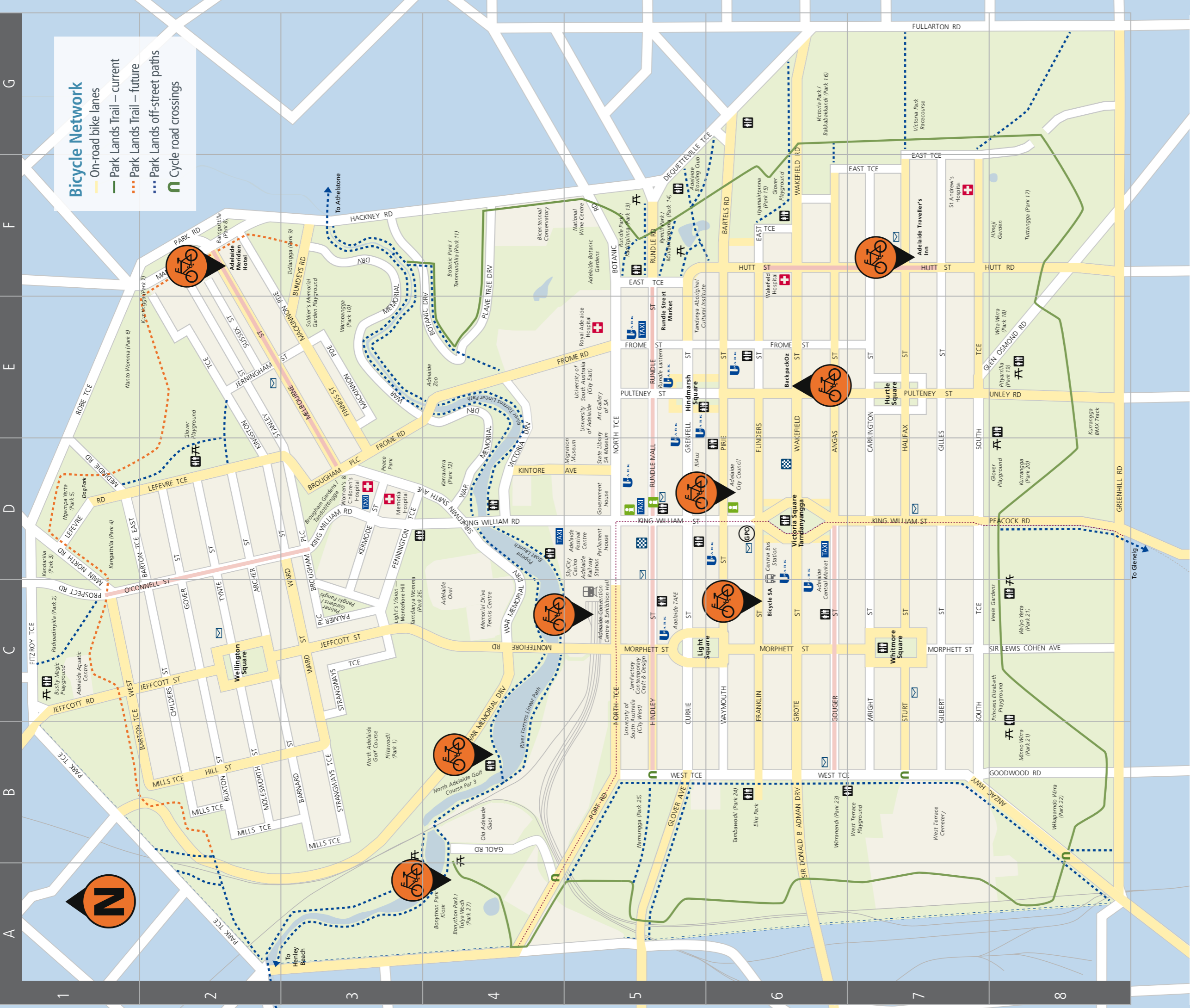
All you need is your driver's licence or passport. City Bikes can be picked up from the following locations (shown on the map overleaf):

- **Bicycle SA**
111 Franklin Street, Adelaide
Ph: (08) 8168 9999
Open 7 days, 9am–5pm
(summer weekends open 8am–6pm)
- **Adelaide City Council**
25 Pirie Street, Adelaide
Ph: (08) 8203 7203
Open Mon–Fri, 8:30am–5:30pm
- **Adelaide Convention Centre**
North Terrace, Adelaide
Ph: (08) 8212 4099
Open Mon–Fri, 9am–4pm
- **Adelaide Meridien Hotel**
21–39 Melbourne Street, North Adelaide
Ph: (08) 8267 3033
Open 7 days, 8am–6pm
- **Bonython Park Kiosk**
Bonython Park, Port Road (overlooking Torren's River)
Open weekends, public holidays, school holidays, 10am–3.30pm
- **Backpack Oz**
144 Wakefield Street, Adelaide
Ph: 1800 633 307
Open 7 days, 6am–10pm
- **North Adelaide Golf Course**
War Memorial Drive, (near the Torrens Weir), North Adelaide
Ph: (08) 8203 7273
Open 7 days, 10am–4pm
- **Adelaide Traveller's Inn**
220 Hutt Street, Adelaide
Ph: (08) 8224 0753
Open 7 days, 8am–7pm



Customer Centre
25 Pirie Street, Adelaide
Postal Address
GPO Box 2252 Adelaide SA 5001
Ph: (08) 8203 7203
www.cityofadelaide.com.au/bike





Bicycle Network

- On-road bike lanes
- Park Lands Trail – current
- Park Lands Trail – future
- Park Lands off-street paths
- Cycle road crossings

General

- Information
- Public Toilets
- Police
- Hospital
- Post Office
- Picnic/BBQ Area
- Restaurant Precincts

Transport

- Railway
- Tramline
- Taxi Stands
- Free City Bikes
- Free Undercover UPark Bike Parking
- Adelaide Railway Station
- Adelaide Central Bus Station

Places of Interest

- C1 Adelaide Aquatic Centre
- F5 Adelaide Botanic Gardens
- F5 Adelaide Bowling Club
- C6 Adelaide Central Market
- C5 Adelaide Convention Centre
- D5 Adelaide Festival Centre
- C4 Adelaide Oval
- E4 Adelaide Zoo
- E5 Art Gallery of South Australia
- C5 JamFactory Contemporary Craft & Design
- C3 Light's Vision – Montefiore Hill
- C4 Memorial Drive Tennis Centre
- D5 Migration Museum
- F5 National Wine Centre of Australia
- B3 North Adelaide Golf Course
- B4 Old Adelaide Gaol
- D5 Parliament House
- D4 Popeye Boat Launch
- D5 Royal Institute of Australia (RiAus)
- E5 Rundle Lantern
- D5 Skycity Casino
- D5 South Australian Museum
- D5 State Library
- E5 Tandanya Aboriginal Cultural Institute